



Royal Classic

Saturday January 6, 2018 at 5:00 pm
Hansen Learning Center in Ames, IA

Lifestyle, Livelihood, Legacy

Event Schedule:

- Friday, January 5th
- Cattle available for viewing
- Saturday, January 6th
- Cattle available for viewing
- 4-7pm Meal by B Fabulous BBQ
- 5pm Auction Begins



Location:

Hansen Student Learning Center
 2516 Mortensen Road
 Ames, Iowa 50011

Videos & Updates:

www.dwyercattle.com

Online Bidding/Broadcast:

www.liveauctions.tv

Sale Staff:

- Jered Shipman 806-392-9241
- Tom Rooney 515-491-6025
- Mike Sorenson 641-745-7949
- Buddy Robertson 580-747-7000
- Dalton Lundy 502-727-6898
- Courtney Lovett 402-984-3133
- Delvin Helderman 405-205-1116

Sale Management:

Dwyer Cattle
 Bob 309-337-1404
 Nick 309-337-6404
www.dwyercattle.com

Lodging:

Gateway Hotel & Conference Center
 2100 Green Hills Drive
 Ames Iowa 50014
 PH: 514-292-8600
 Block saved under Royal Classic

Sale Terms continued page 42

Westwood Embryo Service Donates Flush!

Westwood Embryo Services, Inc. is offering to the buyer of the high selling female of the 2018 Royal Classic Sale, one free embryo flush on the female with their choice of breeding sire. Buyer will also receive free freezing on a maximum of 3 embryos yielded from the embryo flush or three fresh transfers from the embryo flush into the purchaser's recipients. The embryo work is to be completed at Westwood's Facilities in Waverly, IA. Additional housing, freezing, and transfers will be charged accordingly to current price structure. The flush is to be completed by November 1, 2018. Contact Dr. Michael Pugh at 319-352-5095 for more details.

Westwood Embryo Services, Inc.

1760 Dakota Ave. Waverly, IA 50677
www.westwoodembryo.com

E&B Arthur Land & Cattle and Steinbronn Farms will host a open house on Saturday December 30 & 31st open at noon each day. Located at: 22456 Pheasant Ave Mason City IA 50401

Welcome! We are really excited to offer up this set of females to you January 6th. The cattle represented in this catalog represent the top sort from each of our programs. We feel these cattle being offered can thrive in your pastures and provide each of you value based stepping stone genetics that will lead your program to profitability in the future.

The cattle being offered in this sale are the type and kind to produce not only high end show cattle but also sound functional females. These females can also be used to produce herd sires for your program by producing high performing seedstock, which will add pounds and genetic merit to your next generation of calves. It is no secret the Ag community has faced its share of challenges in the last few years, but one of the bright spots has been in the cattle production sector, especially in value added seedstock.

Over the years quality Registered Cattle have withstood every market cycle, and we feel the cattle presented in this offering, offer Value & Profitability to their new owners. For us, as well as many of you, this industry is our **Lifestyle and Livelihood to produce a Legacy for the future**. Thus, we proudly offer to each of you this set of cattle and genetics as the lots listed represent the fruits of our labor over the past years.

As you look through this catalog, I'm sure you will note that many of the females offered are backed by generations of elite donors, which will add to the predictability and potency of future generations produced by these females.

If you have any questions regarding this offering feel free to give us a call. We look forward to seeing each of you in Ames after the holidays!

Thank you, Royal Classic Group

In the event of a winter storm we will postpone the sale until Sunday January 7, 2018 at 1:30 pm. If the need arises we will post the postponement on the sale website by noon Saturday.

Featured Consignors...

Darren Arthur Cattle

Mason City, IA

Darren 641-512-8332

4B Land & Cattle

Sioux City, IA

Brent 712-251-0806

Colton 712-253-7002

Hecksel Simmental Farm

Mayer, MN

Ryan 952-201-8662

Seth Plendl Cattle &

Plendl Farms

Kingsley, IA

Seth 712-251-5276

Rob 712-490-7109

Vary Simmentals

Roseville, IL

Mike 815-718-2018

Tom 309-337-8404



E&B Arthur Land & Cattle

Eric 641-430-4902

Bridget 641-430-6009

www.ebarthurlandandcattle.com



Steinbronn Farms

Kurt 319-350-8195

www.steinbronnfarms.com



Mueller Farms

Jim 320-583-6840

Stacie 320-583-6841

Erick Barberg 651-260-1951

www.muellerfarms.net

The Expecting A Dream Tribe...



Lot 1



SVF/HS Expecting A Dream



Lot 2

1

STN Stein's Lady 924B

3/24/16 • PB Simmental • #3334620

Mr NLC Upgrade Mr HOC Broker
Mr TR Hammer 308A ET **WAGR Playmate 924B**
 SVF/HS Expecting A Dream 3C Melody M668 BZ

CE	BW	WW	YW	Milk	API	TI
0.6	3.9	75.1	114.4	16.8	99.7	70.0

Due 2/3/18 to TKCC Carver

DONOR ALERT: This heifer's dam also came from the 2014 Hartman Customer appreciation sale and straight to our donor pen. The 3C Melody daughters are very sought after and popular in the industry. This heifer does nothing except keep getting better every time I see her. She has been a pasture favorite since birth. She is very long sided, huge footed, square hiped, and sound. This one belongs in the new owners donor pen as soon as she calves this Carver calf. Bred up to the increasingly popular Pilgrim son-Carver.

Steinbronn Farms

2

STN Dreams Remorse

3/4/16 • 3/4 Simmental • #3251974

Yardley High Regard CNS Dream On L186
W/C No Remorse 763Y **SVF/HS Expecting A Dream**
 DW Susanna 763T SVF/NJC Expectation

CE	BW	WW	YW	Milk	API	TI
5.9	0.3	52.0	80.1	22.4	100.7	58.3

Due 3/14/18 to SFI Enough Said (ASA: 3139289)

Expecting a dream outdid herself here. This girl is a stout made, perfect ribbed shaped, structurally correct heifer that is definitely going to do big things in the future. Bred up to Enough Said.

**Steinbronn Farms, E&B Land & Cattle,
 & Denning Farms**

3

Royal Classic

3

STN Dreams Insight

3/4/16 • 1/2 Simmental • #3251973

SAV Brilliance 8077

CNS Dream On L186

PVF Insight 0129

SVF/HS Expecting A Dream

PVF Missie 790

SVF/NJC Expectation

CE	BW	WW	YW	Milk	API	TI
12.7	0.4	67.2	115.0	30.8	141.2	77.0

Due 4/5/18 to HL Loaded Up (ASA 3145648)

Pay Attention here: We have a half blood that sure could improve anyone's program. She is a great looking baldy that has the genetic base to be awesome! The combination of the Angus bull Insight and the Dam of Hammer make this heifer a money making machine. She is bred to our herd bull, HL Loaded Up, but don't let that stop you on this great heifer. This guy is turning into a great One, you will be seeing more him in the future.

**Steinbronn Farms, E&B Land & Cattle,
& Denning Farms**



Lot 3

4

Expecting A Dream D351

4/9/16 • 1/2 Simmental • #3334621

OCC Legend 616L

CNS Dream On L186

BC Lookout 7024

SVF/HS Expecting A Dream

Gibbet Hill Mignonne E37

SVF/NJC Expectation

CE	BW	WW	YW	Milk	API	TI
10.7	0.7	59.6	95.1	18.3	137.4	73.6

Due 3/14/18 to Colburn Primo



Lot 4

5

Expecting A Dream D363

4/16/16 • 1/2 Simmental • #3334622

OCC Legend 616L

CNS Dream On L186

BC Lookout 7024

SVF/HS Expecting A Dream

Gibbet Hill Mignonne E37

SVF/NJC Expectation

CE	BW	WW	YW	Milk	API	TI
10.7	0.7	59.6	95.1	18.3	137.4	73.6

Due 3/14/18 to HL Loaded Up (ASA: 3145648)

Lots 4 & 5 - Here are 2 half blood heifers out of the famous Expecting a Dream, also known as Hammer's mom... All of the females that we have raised out of Expecting A Dream have been amazing mothers, looked the part and have raised the next generation of great ones.

**Steinbronn Farms, E&B Land & Cattle,
& Denning Farms**



Lot 5

The 5001 Tribe...



Lot 6



\$32,500 Primo x 5001



\$10K First Class x 5001



Lot 7

6

SPCC Insight 786D

2/24/16 • Reg. Angus • #Pending

7

SPCC Whiskey 60D

2/4/16 • Mainetainer • #Pending

SAV Brilliance 8077

BR Midland

Ice Pick

BR Midland

PVF Insight 0129

Lazy H Bar Forever Lady 5001

Irish Whiskey

Lazy H Bar Forever Lady 5001

PVF Missie 790

VAR Forever Lady 4303

NTC 615 Ever Ready

VAR Forever Lady 4303

CED	BW	WW	YW	Milk	\$W	\$B
-	-	-	-	-	-	-

Due 3/15/18 to CAJS Blaze of Glory

CE	BW	WW	YW	Milk	API	TI
-	-	-	-	-	-	-

Due 2/12/18 to CAJS Blaze of Glory

The Lazy H Bar Forever Lady 5001 donor female needs little introduction as she has amassed a lifetime of earnings nearing the \$750,000 mark, by producing Angus, SimAngus, & MaineAngus females who have excelled in the show ring as well as in the pasture. A daughter by Primo sold in our Females Building a Legacy Female Sale this October for \$32,500 and was recently selected Reserve Champion Angus at the Badger Kickoff. The 5001 donor who is going on 13 years of age has simply never missed and continues to add capacity, skeletal width, and a sharp look to all of her progeny. Be sure you study the daughters and granddaughters of her hard on sale weekend as these females have the lineage and the look to develop into leading donors for their new owners. 786D is a daughter by Insight who is striking through her front one third, and yet doesn't give up any cow power this female is extra wide bodied, and stands on a powerful foot. 60D brings that added power to the table. This own daughter of Irish Whiskey excels in her structure and ties into her hip structure beautifully. A baldy daughter by 5001 x Blaze of Glory was one of our sale topping SimAngus females commanding \$11,700, thus the proof is already out on the matings presented here!

Plendl Cattle Co.

5

Royal Classic



Lot 8



\$11,700 Blaze of Glory x 5001



CAJS Blaze of Glory



Lot 9

8

SPCC Forever 6279D

2/20/16 • 1/2 Simmental • #Pending

9

SPCC Steel My Show

1/10/16 • 1/2 Simmental • #3333560

CNS Dream On L186
SVF Steel Force S701
 SVF Sheza Beauty 901

BR Midland
Lazy H Bar Forever Lady 5001
 VAR Forever Lady 4303

CNS Dream On L186
SVF Steel Force S701
 SVF Sheza Beauty 901

Dameron First Class
Lazy H Bar Forever Lady 332
 Lazy H Bar Lady 5001

CE	BW	WW	YW	Milk	API	TI
8.1	0.8	57.5	84.2	15.3	99.7	64.0

Due 1/12/18 to CAJS Blaze of Glory

CE	BW	WW	YW	Milk	API	TI
8.5	0.6	59.6	90.4	14.4	108.3	68.3

Due 1/12/18 to CAJS Blaze of Glory

It won't be easy to let this one leave the farm, but when you commit to bringing your best you have to put one like this on the trailer. 6279D exemplifies the type and kind we love to produce. Big footed, powerful from the ground all the way up, long bodied, and extended fronted. Not to mention she is a direct daughter of 5001 who has highlighted the high sellers list of our sales for the past few years. If you are looking for a future donor this one should be on your short list.

Plendl Cattle Co.

Big time baldy right here. Study this one hard as she will take a while to poke a hole in. Steel My Show is a long bodied, well balanced Steel Force female who fills her stride with ease and grace. I love the capacity and cow power she bring to the forefront as well as her stellar structural design. This one is front pasture quality and is going to calve out early to Blaze of Glory. Get her home quick after the sale.

Plendl Cattle Co.

Simmental Bred Females



Lot 10



W/C Executive Order



Lot 11

10 *PZC Insight's Bling 656D*

1/24/16 • 1/2 Simmental • #3190412

SAV Brilliance 8077
PVF Insight 0129
 PVF Missie 790

Mr HOC Broker
PZC Brooke Anne
 HHSF Black Glitter

CE	BW	WW	YW	Milk	API	TI
9.3	1.9	68.8	110.5	27.8	110.4	70.9

AI 5/12 to W/C Executive Order 8543B

Check out this stylish Insight daughter! Femininity, balance and power all in one. We purchased Bling at this sale last year for a 4-H kid back home. She did her job for the summer, and now we are passing her on to you for her next job, laying down and having one heck of an Executive Order calf! Still wondering why we aren't keeping her, she has the look and pedigree to make some good ones. AI safe with no bull exposure and halter broke.

Mueller Farms

11 *JSMF Patty*

4/5/16 • 3/4 Simmental • #3108580

SVF Steel Force S701
Mr HOC Broker
 JM BF H25

PVF All Payday 729
HILB/SHER Payin 4 Glory
 SVF Sheza Glory T912

CE	BW	WW	YW	Milk	API	TI
0.3	3.2	66.8	102.6	17.0	84.6	58.8

AI 6/6 to W/C Executive Order 8543B

PE to JSMF/FVF Glitter Ignites.

Patty is an attractive, clean fronted, bold sprung, level topped female that will go on to be a productive addition to any herd. Her dam was a pick of ours at the Hilbrands Jewels of the Northland Sale. Her first two years of production has given us two outstanding heifers to bring to the sale for you to evaluate. You can't go wrong investing in SimAngus.

Mueller Farms

Simmental Bred Females



Lot 12



W/C United



Lot 13

12 JSMF/FVF Got Her Way

3/15/16 • 3/4 Simmental • #3098381

Yardley High Regard
W/C No Remorse 763Y
DW Susanna 763T

3C Macho M450 BZ
Learns Black Fever
Learns Sheza Queen

CE	BW	WW	YW	Milk	API	TI
2.3	1.3	51.8	74.9	22.7	76.2	52.0

AI 4/20 to W/C United. Safe AI.
PE to JSMF/FVF Glitter Ignites.

Got Her Way is out of our favorite Macho cow, from a powerful pedigree cow family. She traces back to the great Sheza Dandy cow that is the base on multiple breed leading donor cows. Her Sire, No Remorse, has proven to make solid cows and value added progeny. She has that cool front, style, big rib and sound structure. Note that she has no Dream On in her pedigree. Safe AI to W/C United and due on January 28 2018. Halter broke.

Mueller Farms & Erick Barberg

13 JSMF/FVF Lola

3/3/15 • PB Simmental • #2986468

SVF Steel Force S701
Mr HOC Broker
JM BF H25

Mr NLC Upgrade
AJE Miss Belle Z7
AJE Gabby R7

CE	BW	WW	YW	Milk	API	TI
0.3	3.6	71.9	104.6	17.3	86.5	65.0

AI 4/30 to CAJS Blaze of Glory. Safe AI.
PE to JSMF/FVF Glitter Ignites.

Lola is a powerful female that has length, depth, bone and style. A daughter of our donor AJE Belle, who we had great success with in both the State and National level show rings. She has become one of our favorite cows. Broker sired, adds the style we look for in females. Imagine the Blaze of Glory baby running next to her this summer making a sweet pair in the pasture or even the show ring with National being in Minnesota. Safe AI to CAJS Blaze of Glory on 4/30/2017. Due on February 7, 2018. Halter broke.

Mueller Farms & Erick Barberg

HSF Hannah W986 Family...



Lot 14



JRB/HSF Jenessa E125
\$10,500 Broker x Hannah W986



HSF Hannah W986



Lot 15

14 *JRB/HSF Annabelle D163*

2/12/16 • PB Simmental • #3331375

15 *HSF/JRB Electra D984*

2/11/16 • 3/4 Simmental • #3152313

CNS Pays to Dream T759 BMR Explorer
LLSF Pays to Believe ZU194 **HSF Hannah W986**
 LLSF Ura Baby Doll HSF Hannah Montana

Remington Lock n Load BMR Explorer
W/C Lock Down 206Z **HSF Hannah W986**
 GCF Miss New Level HSF Hannah Montana

CE	BW	WW	YW	Milk	API	TI
10.3	0.0	51.8	69.8	12.4	126.3	66.8

AI 6/8 to CLRS Aftershock 604A (ASA #: 2735656)

CE	BW	WW	YW	Milk	API	TI
17.6	-2.3	53.4	76.7	9.7	136.0	65.9

AI 5/31 to ASR Augustus (ASA #: 2653966)

We have sold a lot of good bred over the years but these two girls are among some of our best. These two are definitely the front pasture kind. Both sisters are big bodied, sound structured, big footed, and nice fronted. Their donor dam, HSF Hannah W986, has done a great job for our program. Two maternal siblings were sale highlights this past year. JRB/HSF Kagney C986 was one of the high selling females at the 2017 Minnesota Simmental State Sale to Chambers Cattle, IA, for \$4,900. Another maternal sibling JRB/HSF Jenessa E125 was the high seller in MPJ online sale this fall for \$10,500. These two are destined for the donor pen. Now you just have to decide which one you like better the stunning baldy or the black beauty. I don't think you can make a wrong decision. Owned with JRB Farms Corral, MN. We reserve the right to a future flush on both D163 and D986 with a minimum of six (6) transferable embryos to be done at the seller's expense and the buyer's convenience.

Hecksel's Simmental Farm



Lot 16



SVF/BT Sazerac Y702



Lot 17

16 *HSF/Learns Olivia D651*

3/17/16 • 3/4 Simmental • #3331374

17 *HSF/Learns Taylor D647*

3/3/16 • 3/4 Simmental • #3331372

W/C United 956Y HC Power Drive 88H
 W/C Executive Order 8543B SVF/BT Sazerac Y702
 Miss Werning 8543U Myers Queen Sazerac P94

W/C United 956Y HC Power Drive 88H
 W/C Executive Order 8543B SVF/BT Sazerac Y702
 Miss Werning 8543U Myers Queen Sazerac P94

CE	BW	WW	YW	Milk	API	TI
7.8	0.4	54.0	84.2	21.8	108.6	63.0

AI 5/30 to ASR Augustus (ASA #: 2653966)

CE	BW	WW	YW	Milk	API	TI
8.1	0.2	58.7	90.7	20.6	111.2	66.0

AI 5/30 to ASR Augustus (ASA #: 2653966)

Here is a neat pair of sisters that are granddaughters of the great Myers Queen Sazerac P94. We bought their dam, SVF/BT Sazerac Y702, a few years back as the high seller at the Sunset View Family Traditions Sale. We are just getting rolling with her and so far her future looks bright. D651 is the more moderate frame heifer, both are very good structured, deep and eye appealing. Both bred up for an early March calf. Owned with Learns Simmentals.

Hecksel's Simmental Farm



Lot 18 - JSMF Flick of Glitter

18

Pregnancy by Flicka

Choice of Pregnancy by Flicka

A. TL Bottom Line (2905451)

SS Ebony's Grandmaster

B. Mr CCF 20-20 (2964446)

JSMF Flick of Glitter (2534588)

HS Unity U334

Both Due 1/5/18 will be PB Simmental

A great opportunity to tie into heifer pregnancies by the 2012 NWSS Champion Female Flick of Glitter. Study the daughters by her sale weekend and you will see just how potent these two heifer pregnancies will become. If you are looking to start 2018 off on the right foot be sure you dive head first into this opportunity! Both matings are out of syndicated Hartman sires who are dominating not only in the show ring but also in donor pens all across the nation. Great opportunity presented here!

Steinbronn Farms & E&B Land & Cattle



TL Bottom Line



Mr CCF 20-20



Lot 19



Lot 20

19

EBA/STN Flicka's Work

2/21/16 • PB Simmental • #3238693

20

STN Chromed Brilliance

2/7/16 • PB Simmental • #3334624

SAS T101 Sweet Meat
Old6/SAS Womack W442
 SAS Black Beauty

SS Ebony's Grandmaster
JSMF Flick of Glitter
 HS Unity U334

SVF Steel Force S701
FBF1 Combustible
 Lazy H Burn Baby R34

SS Ebony's Grandmaster
JSMF Flick of Glitter
 HS Unity U334

CE	BW	WW	YW	Milk	API	TI
3.6	2.8	55.4	73.1	17.8	108.2	62.1

CE	BW	WW	YW	Milk	API	TI
10.1	2.1	54.7	82.6	15.1	108.7	61.6

AI 4/21 to Blaze of Glory. Vet Called Safe AI
 PE 5/7 till 8/1 Living the Dream (ASA #: 3230473)

AI 4/22 to Uno Mas Sexed. Too close to call
 PE 5/7 till 8/1 Living the Dream (ASA #: 3230473)

A long and level designed Womack daughter by Flick of Glitter. This female is a standout in every sense. Big bodied, added capacity and safe AI to Blaze of Glory.

Here is an opportunity to take home a great bred heifer out of the 2012 Denver Champion Heifer, Flick of Glitter. She is sired by Combustible with a very clean front and is sound as a cat. Throw in a little extra chrome and you have an extraordinary heifer to add to your front pasture!

E&B Arthur Land & Cattle & Steinbronn Farms

E&B Arthur Land & Cattle & Steinbronn Farms

21 *STN/EBA Strike of Flicka*

10/25/15 • PB Simmental • #3334625

Mr NLC Upgrade SS Ebony's Grandmaster
Mr TR Hammer 308A ET **JSMF Flick of Glitter**
 SVF/HS Expecting A Dream HS Unity U334

CE	BW	WW	YW	Milk	API	TI
6.1	1.8	67.4	103.1	15.9	119.0	71.7

Due 1/5/18 to TL Bottom Line



Lot 21

22 *STN/EBA Twinkles Flash*

10/24/15 • PB Simmental • #3334626

Mr NLC Upgrade SS Ebony's Grandmaster
Mr TR Hammer 308A ET **JSMF Flick of Glitter**
 SVF/HS Expecting A Dream HS Unity U334

CE	BW	WW	YW	Milk	API	TI
6.1	1.8	67.4	103.1	15.9	119.0	71.7

Due 1/5/18 to TL Bottom Line



Lot 22

23 *STN/EBA Enhanced Luster*

10/20/15 • PB Simmental • #3334627

SS Ebony's Grandmaster SS Ebony's Grandmaster
Mr NLC Upgrade U8676 **JSMF Flick of Glitter**
 Ms NLC Mojo S6119 B HS Unity U334

CE	BW	WW	YW	Milk	API	TI
7.8	1.6	64.6	94.5	15.9	121.1	73.8

Due 1/7/18 to Mr CCF 20-20



Lot 23

These 3 fall born calves were carried over and bred up specifically for this sale! These Flick of Glitter daughters will turn into great cows that will bring you quality babies every year, We have sold many Flicka daughters over the years, all turning into amazing cows, good mommas, and producing animals that you can be proud of! These 3 are destined to do the same. The 2 Hammer daughters bred up royally to Bottom Line, the 2016 American Royal and NAILE Bull Champion and the Reserve Champ in Denver. We have found that he is throwing big bodied, deep, soggy offspring that will bring you strong replacements for your bull pen, and likewise with your heifer pen. The Upgrade daughter being bred to the great Vision son, 20/20, that continues to throw amazing animals! To make these look even better they are bred up to possibly be pairs by sale day, or be your first calving heifers at home. Either way you won't have to wait long to see their babies.

Steinbronn Farms & E&B Land & Cattle

*Online Video Previews available at:
www.dwyercattle.com*



Travis Thomas
Cell: 201-988-5526
Osage, Iowa



www.biggain.com
416 Matthews St.
Mankato, MN 56001
Toll Free 1-800-795-1277

SNF Current Beauty Cow Family



Lot 24



W/C Relentless



Lot 24A

24

SNF Current Beauty Z-11

10/9/12 • 3/4 Simmental • #2767619

24A

Varys Ms Zoey 11E

3/14/17 • PB Simmental • #3279285

HTP/SVF Duracell T52 Black Irish Kansas
SS/PRS High Voltage 244X **Ankony Lass S098**
 KenCo Miley Cottontail Victoria Lass D14

TLLC One Eyed Jack SS/PRS High Voltage
STCC Jack Around 4031 **SNF Current Beauty Z-11**
 HF Serena Ankony Lass S098

CE	BW	WW	YW	Milk	API	TI
14.1	-0.2	60.1	86.7	17.5	121.0	65.5

CE	BW	WW	YW	Milk	API	TI
9.3	1.3	57.0	78.8	16.9	118.2	68.1

AI 5/4 to W/C Relentless. Vet called Safe AI

Sure things are hard to find in the cattle business but the pair being offered here is as close to a sure thing as you will find in the entire offering. Z11 is a cool profiled, big numbered High Voltage daughter who has flat done it all for our operation. This female is hard to fault in terms of structure, displays a neat udder design, and is still halter broke. Her daughter at side by Jack Around speaks volumes for the quality stored within this cow family. 11E is bold ribbed, good haired, and blends high impact EPD data with a cool show ring look. Be sure you look this pair up sale weekend as they have the look and quality to take your program to the next level.

Vary Simmentals

Show Heifer Prospects



Lot 25



Stubborn Love



Lot 26

25

Cambell 43E

1/25/17 • 1/4 Simmental • #3285160

Gambles Hot Rod

Mr HOC Broker

Silveiras Style 9303

Miss Lucy

Silveiras Elba 2520

95

CE	BW	WW	YW	Milk	API	TI
10.1	1.1	54.5	89.1	16.9	109.9	63.1

A breath taking 1/4 blood female with a royal bloodline backing her. 43E is a daughter of Style out of a truly impressive Broker daughter who is quickly gaining attention in our program. This female is soft, sound, and has a big sweep to her rib cage. If you are looking to run hard in the AOB division this female is the one that can take you to the back drop.

4-J Simmentals

26

VAS Ms Love 402E

1/3/17 • 3/4 Simmental • #3319063

TJSC Optimus Prime 12

Mr HOC Broker

CSCX Bandwagon 513A

Stubborn Love

KLS Diamond W516

KCC Enchantress 515

CE	BW	WW	YW	Milk	API	TI
5.1	1.9	55.6	85.3	17.1	100.0	61.3

This Bandwagon female is out of one of the most dominant Broker daughters to ever show in Illinois, and a current donor for Minnaert Show Cattle. 402E is soft and sound in her makeup, has that cool club calf type hair, and has a great disposition. If you are looking for a cool show heifer who will develop into a high powered breeding piece here is the lady for you.

Vary Simmentals & 4-J Simmentals

Simmental Bred Heifers



Lot 27



W/C No Remorse



Lot 28

27

EBA Vivian D19

2/18/16 • 1/2 Simmental • #3189642

Flying B Cut Above
TJSC Vindication 152A
TJSC So Sweet 9W

Silveiras Style 9303
4WA Blackbird 111
LF Ms Lynn R35

CE	BW	WW	YW	Milk	API	TI
9.8	1.1	44.0	73.7	17.0	97.3	54.2

AI 5/30 to No Remorse Sexed. Too close to call PE 6/5 till 8/1 EBA Steel Fusion (ASA #: 3327277)

One of the true standouts in this offering. Vivian is one of the best Vindication daughters we have raised to date. Her soft makeup, excellent hair, and high performing design will help lead her to the donor pen. Study this one hard sale weekend, she is just so well balanced that you will find it hard to poke a hole in her design.

E&B Arthur Land & Cattle

28

EBA Demi D20

3/6/16 • 1/2 Simmental • #3326624

Mr NLC Upgrade
Mr TR Hammer 308A ET
SVF/HS Expecting A Dream

B/R Future Direction
Pine View Rita Y027
SH Rita 2168 5109

CE	BW	WW	YW	Milk	API	TI
4.5	2.0	71.0	119.3	18.4	115.3	77.1

AI 4/21 to Mr CCF 20-20. Vet called Safe AI PE 5/7 till 8/1 Living the Dream (ASA #: 3230473)

A high performing Hammer female who is big bodied, and structurally correct. This big bodied female sells safe in calf to 20-20 for a quick return on investment.

E&B Arthur Land & Cattle

GAR Big Eye 2509 Daughters



Lot 29



Lot 30

29

EBA Delila D521

1/26/16 • 1/2 Simmental • #3326631

Mr NLC Upgrade U8676 ALC Big Eye D09N
Mr TR Hammer 308A ET **GAR Big Eye 2509**
 SVF/HS Expecting A Dream GAR Objective 106

CE	BW	WW	YW	Milk	API	TI
11.1	0.2	72.1	122.6	23.1	138.6	81.7

AI 4/22 to Mr CCF 20/20. Due 2/19/18
 PE 5/7 till 8/1 Living the Dream (ASA #: 3230473)

30

EBA Dottie D532

1/26/16 • 1/2 Simmental • #3326630

Mr NLC Upgrade U8676 ALC Big Eye D09N
Mr TR Hammer 308A ET **GAR Big Eye 2509**
 SVF/HS Expecting A Dream GAR Objective 106

CE	BW	WW	YW	Milk	API	TI
11.1	0.2	72.1	122.6	23.1	138.6	81.7

AI 4/22 to Mr CCF 20/20. Due 3/11/18
 PE 5/7 till 8/1 Living the Dream (ASA #: 3230473)

Oh how rare it is for the API index to actually correlate with eye-appeal but with this pair of Hammer daughters the computer system got it right. These two females are embryo daughters of our leading Angus donor 2509 who is well noted around here for producing females with added foot, perfect structure, and an easy fleshing design. The 521 female is an absolute standout in every sense she stands on a monster foot, displays a trim sleek front one third, and moves out with impeccable structure. The 532 female is a touch more moderate in her frame and displays a long square hip with ample rib shape. The predictability with these two females will be off the charts as their pedigrees are lined with some of the best cow families in their respective breeds.

E&B Arthur Land & Cattle

Simmental Bred Heifers



Lot 31



Lot 32

31

SPCC Dozer 817D

2/24/16 • PB Simmental • #Pending

WS Pilgrim H182U ASR Final Sort X0151
Dozer **Hart Miss 144A**
 WW3 Countess 169Y Hart Sheza Superior

CE	BW	WW	YW	Milk	API	TI
-	-	-	-	-	-	-

Due 1/12/18 to CAJS Blaze of Glory

This purebred baldy standout is sure to find her share of admirers sale weekend. This Dozer daughter exemplifies the type and kind we strive to produce. Added capacity, style, power, and that "IT" factor. Study her long and hard.

Plendl Cattle Co.

32

SPCC Light Up My World

2/10/16 • 3/4 Simmental • #3333568

SVF Steel Force S701 Meyer Ranch 734
BBF1 Combustible **Lazy H Bar Forever Lady 41W**
 Lazy H Burn Baby R34 Lazy H Bar Lady 5001

CE	BW	WW	YW	Milk	API	TI
5.4	2.6	57.4	87.4	18.6	90.6	57.4

Due 3/12/18 to CAJS Blaze of Glory

A Combustible female who goes back to the infamous 5001 donor. Longevity and performance are breed down deep in this pedigree. 707D is huge bodied, big hiped, soft in her design with all the flex and soundness you could want. Sure fire donor material-Don't miss her!

Plendl Cattle Co.

Simmental Bred Heifers



Mr TR Hammer



33

SPCC Maxi Girl 764D

2/12/16 • 3/4 Simmental • #3333570

Mr NLC Upgrade
Mr TR Hammer 308A ET
SVF/HS Expecting A Dream

GF Maximus N391
Plendl Maximus
Lazy H Bar T68

CE	BW	WW	YW	Milk	API	TI
2.5	2.5	66.3	102.6	17.6	91.4	63.6

Due 3/20/18 to CAJS Blaze of Glory

764D has flash and style with profile! Zipper fronted and stout made with plenty of bone and structural correctness. You couple her killer looks with a 3/4 pedigree. I'm sure you can fill in the blanks as to what her purebred sons and daughters will look like and sell like once they hit the ground. If you are looking for a no miss breeding piece make your mark beside Lot 33!

Plendl Cattle Co.

34

SPCC Miss Heart 746D

2/24/16 • 3/4 Simmental • #3333570

Mr NLC Upgrade
Mr TR Hammer 308A ET
SVF/HS Expecting A Dream

GF Maximus N391
Plendl Maximus
Lazy H Bar T68

CE	BW	WW	YW	Milk	API	TI
2.5	2.5	66.3	102.6	17.6	91.4	63.6

Due 3/15/18 to CAJS Blaze of Glory

A bold sprung, big bodied Hammer daughter who goes back to a tremendous Maximus daughter. Study this female hard when you get to Ames. I feel for a future breeding piece this one could be pretty special. Her combination of a clubby look with a high percentage paper will lead her to producing some killer purebreds in the near future. Buy with confidence.

Plendl Cattle Co.

Simmental Bred Heifers



Lot 35



Mr CCF 20-20



Lot 36

35

EBA Dessi 1018D

1/27/16 • 3/4 Simmental • #3326632

Yardley High Regard
W/C No Remorse 763Y
DW Susanna 763T

Mr HOC Broker
EBA Flicka's Cindy 1018B
JSMF Flick of Glitter

CE	BW	WW	YW	Milk	API	TI
3.4	0.1	47.6	67.7	18.7	77.7	51.6

AI 4/22 to CAJS Blaze of Glory. Safe AI
PE 5/7 till 8/1 Living the Dream (ASA #: 3230473)

Imagine the PB mating possibilities of this No Remorse daughter. Dessi is not only striking on the profile and breath taking when set in motion she also is as royally bred as any female in the offering. This 3/4 female goes back to Flick of Glitter, a past NWSS Champion, who has raised countless high sellers as well as donor females across the nation. Big time opportunity here!

E&B Arthur Land & Cattle

36

EBA Hope & Wish D015

1/16/16 • 3/4 Simmental • #3326622

Yardley High Regard
W/C No Remorse 763Y
DW Susanna 763T

Mr NLC Upgrade
PZC Got My Wishes
SS Baby's Breath P035

CE	BW	WW	YW	Milk	API	TI
3.6	2.3	58.9	85.5	23.8	89.3	60.9

AI 4/29 to Mr CCF 20-20. PE due 3/1/18
PE 5/7 till 8/1 Living the Dream (ASA #: 3230473)

Study your history here. This female is a maternal sibling to the 2014 American Royal Reserve Champion PB Female in the Junior Show, and a granddaughter of the great Baby's Breath. Hope & Wish is long and level in her design and provides added performance at all angles. If you are looking for a great breeding piece to add to your program, look no further.

E&B Arthur Land & Cattle

Simmental Bred Heifers

37

A/C Regina

3/2/16 • 3/4 Simmental • #3324346

Yardley High Regard R Plus King of Yukon
W/C No Remorse 763Y **DFS1 Blackberry**
 DW Susanna 763T SAS Silky U052

CE	BW	WW	YW	Milk	API	TI
5.4	1.1	54.9	76.1	20.4	87.4	55.1

AI 4/22 to CAJS Blaze of Glory. PE due 4/6/18
 PE 5/7 till 8/1 Living the Dream (ASA #: 3230473)
 Moderate framed, cool fronted No Remorse daughter who has been a farm favorite since birth. This female excels in terms of eye-appeal structure, and overall presence.

Darren Arthur Cattle Co.



Lot 37

38

EBA Dannie D012

1/17/16 • 3/4 Simmental • #3326627

Yardley High Regard WS Pilgrim H182U
W/C No Remorse 763Y **EBA Scandalous B012**
 DW Susanna 763T W420

CE	BW	WW	YW	Milk	API	TI
5.8	0.5	51.4	69.2	23.8	101.0	59.6

AI 4/10 to W/C Lock Down. Due 4/15/18
 PE 5/7 till 8/1 Living the Dream (ASA #: 3230473)
 A stylish No Remorse daughter who goes back to one of our top young cows by Pilgrim. This breeding piece female is the type to take your PB program to the next level. Just imagine a pasture full of good haired, clean fronted 3/4 blood females like this one.

E&B Arthur Land & Cattle



Lot 38



Lot 39

39

EBA Dori D004

2/29/16 • 3/4 Simmental • #3326626

Yardley High Regard FLE Rude Boy
W/C No Remorse 763Y **FLE Miss Gloria**
 DW Susanna 763T Haines Cow P09S

CE	BW	WW	YW	Milk	API	TI
6.7	0.5	45.2	63.6	22.5	85.8	52.5

AI 4/21 to Mr CCF 20/20. Safe AI
 PE 5/7 till 8/1 Living the Dream (ASA #: 3230473)
 A moderate framed, sleek fronted daughter of No Remorse who is sure to impress. D004 has that shaggy show ring hair, perfect foot and bone structure, and sells safe AI to the ever popular 20/20 for quick return on investment.

E&B Arthur Land & Cattle

Simmental Bred Heifers



Lot 40



HSF Carmella B410



HSF Hannah Montana



Lot 41

40

HSF Carmen D610

1/8/16 • 1/2 Simmental • #3152708

Dameron First Class
EXAR Classen 1422B
EXAR Princess 2006

LLSF Uprising Z925
HSF Carmella B410
HSF Victoria P30

CE	BW	WW	YW	Milk	API	TI
8.5	1.5	64.3	97.0	18.6	101.4	65.7

AI 4/6 to Mr CCF 20/20

D610 is an ultra feminine, long bodied, huge bel-
lied, soft made, female that is as rocket fronted as you can
make one. Her donor dam, Carmella, is a Victoria daugh-
ter that we kept to replace Victoria in the future. She has
already proven she is up to the challenge. Sells bred to
the hot new 20-20 bull for a January calf. He calves super
easy and boy are they good.

Hecksel's Simmental Farm

41

HSF Havana D634

2/16/16 • PB Simmental • #3331371

W/C United 956Y
W/C Executive Order 8543B
Miss Werning 8543U

SVF/NJC Built Right
HSF Hannah Montana T771
SF Ms Destina K291

CE	BW	WW	YW	Milk	API	TI
14.8	-2.5	53.0	79.2	22.0	141.8	73.0

AI 6/16 to CCR Wide Range 9005A

Hannah Montana has proven time and time again
why she is one of our top donor females with her consis-
tency year after year. Here is a daughter to prove it. D634
is a moderate frame, big bodied, stout made, donor pros-
pect that is super sound and big footed. Sells bred to the
calving ease bull, Wide Range.

Hecksel's Simmental Farm

42 *JSMF/FVF Dreaming Doll*

3/14/16 • PB Simmental • #3098380

CNS Dream On L186 Sandeen's SOS
WAGR Dream Catcher 03R HSF Baby Doll W959
 3C Melody M668 BZ HSF Victoria P30

CE	BW	WW	YW	Milk	API	TI
9.3	1.8	45.4	56.8	20.0	112.3	61.4

AI 5/30 to Colburn Primo. Safe AI.
 PE to JSMF/FVF Glitter Ignites.

Doll is like her dam, a beautiful hairy, stout boned, bold sprung and ties into a sound structure. A favorite, she should have been kept as a donor pen candidate. HSF Baby Doll has produced in excess \$250,000 in embryo and progeny sales, calves have sold for \$16000, \$14000, \$13,000 and so on. She has a perfect udder and does a fantastic job raising calves. Her Grand Dam, Victoria, has exceeded the \$350,000 life time earnings mark and continues to produce excitement. Dream Catcher has made his mark in the Simmental industry by producing powerful cattle with that cool look. Doll was shown as a calf and has a sweet personality. She is safe AI to the exciting Colburn Primo, due March 9 2018, that calf will be a powerfully sweet foundation! Halter broke.

Mueller Farms & Erick Barberg



Lot 42

43 *JSMF/FVF Anna Maria*

5/2/16 • PB Simmental • #3108569

Long's Shear Pleasure DHF Jades Dreamworks
TLLC One Eyed Jack HS/HSF Jaded Lizzy X44
 Longs Ms Sweet Treat AJE-RCC Lizzy's Pearl

CE	BW	WW	YW	Milk	API	TI
4.3	2.3	52.4	70.0	19.1	104.1	61.5

AI 6/15 to W/C No Remorse. Safe AI
 PE to JSMF/FVF Glitter Ignites.

Anna Maria stems from our brood power cow Lizzy, which has won in both the show ring and pasture. Her grand dam is the powerful AJE-RCC Lizzy's Pearl that has made numerous powerful females. Her sire is the ever popular One Eyed Jack that adds a new dimension to her pedigree. She has the cool baldy look with depth, bone, hair, and dimension in a moderate frame. She missed the picture pen as she came in later from pasture. She was in our show string as a calf and did the summer circuit. Safe AI to W/C No Remorse on 6/15/2017. Due on March 25, 2018. Halter Broke.

Mueller Farms & Erick Barberg

44 *HSF Breelynn D649*

3/8/16 • 1/2 Simmental • #3331373

SAV Brilliance 8077 SVF Steel Force S701
Dameron First Impression HSF Blair Y110
 Dameron Northern 3114 HSF Josie 755G L28

CE	BW	WW	YW	Milk	API	TI
10.8	-0.2	62.6	99.3	19.3	106.8	65.5

AI 5/2 to CAJS Blaze of Glory

Here is a really nice half blood heifer. Her dam is one of our best AI cows that never misses and weaned our second heaviest bull calf this fall. This heifer is very easy keeping we pulled her from pasture two weeks before this picture was taken and she is not much behind the rest of the group. Sells bred to the calving ease bull, Blaze of Glory, who has made his mark on the industry this past year.

Hecksel's Simmental Farm



HS/HSF Jaded Lizzy X44



Lot 44

45

DFS1 Chanel

2/28/16 • PB Simmental • #3334773

CNS Dream On L186 R Plus King of Yukon
 SVF Steel Force S701 STN Alex
 SVF Sheza Beauty 901 STN Miss Sugarland

CE	BW	WW	YW	Milk	API	TI
9.8	1.4	60.2	84.6	14.8	107.5	65.2

Due 3/14/18 to Colburn Primo



Lot 45

46

DFS1 Chloe

3/16/16 • PB Simmental • #3334775

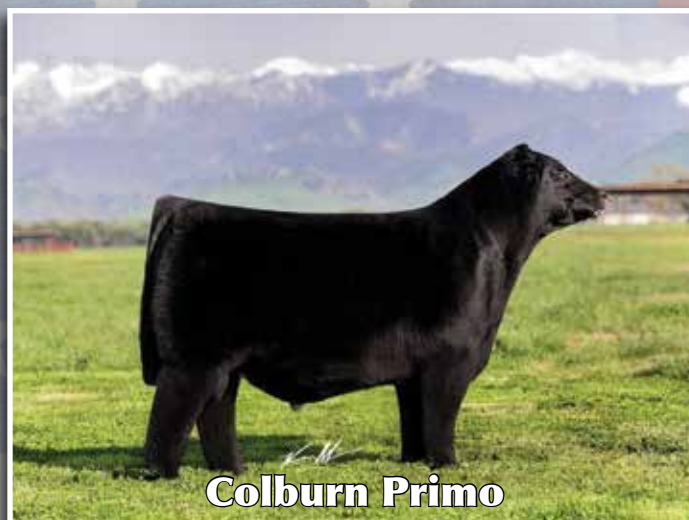
CNS Dream On L186 R Plus King of Yukon
 SVF Steel Force S701 STN Alex
 SVF Sheza Beauty 901 STN Miss Sugarland

CE	BW	WW	YW	Milk	API	TI
9.8	1.4	60.2	84.6	14.8	107.5	65.2

Due 3/14/18 to Colburn Primo

These two full sisters may be considered a little old school genetics but they sure are cool. Study them from top to bottom and it sure is hard to find a fault. Out-crossed genetics for most producers on the dam side. Bred up to Primo to add some more stoutness and to pretty them up.

Steinbronn Farms & Denning Farms



Colburn Primo

47

EBA Danika D022

3/5/16 • PB Simmental • #3326625

W/C No Remorse 763Y R Plus King of Yukon
 W/C BF Innocent Man SAS Magnolia Y212
 Miss Werning 174Y SAS Magnolia U212

CE	BW	WW	YW	Milk	API	TI
7.5	0.9	47.4	68.6	25.2	103.7	57.1

AI 4/21 to CAJS Blaze of Glory. Safe AI
 PE 5/7 till 8/1 Living the Dream (ASA #: 3230473)

A performance oriented Innocent Man female who doesn't disappoint in terms of eye-appeal. This PB Simmental female is a true breeding piece with added length of spine and a big sweep to her rib cage. She sells safe AI to Blaze of Glory for quick returns.

E&B Arthur Land & Cattle



Lot 47

Simmental Bred Heifers

48

EBA Donna D003

2/19/16 • PB Simmental • #3238694

W/C No Remorse 763Y

Hooks Shear Force

W/C BF Innocent Man

JSF Miss Force Y9

Miss Werning 174Y

JSF Katrina W54

CE	BW	WW	YW	Milk	API	TI
11.0	-1.4	41.3	54.1	27.5	121.9	61.9

AI 4/21 to Uno Mas Heifer Semen. Safe AI
PE 5/7 till 8/1 Living the Dream (ASA #: 3230473)

The Innocent Man daughters are gaining popularity across the country for their blend of calving ease and high growth. Donna is a big ribbed PB female who excels in terms of structure and udder design. She sells safe AI to Uno Mas heifer sexed semen!

E&B Arthur Land & Cattle



Lot 48

49

STN Stein's Lady Q

3/26/16 • PB Simmental • #3334619

WS Pilgrim H182U

Mr NLC Upgrade

STN/Stein's Montana Gold

TK Susie Q

GF/HS Dream of Mine

CWT Susie Z4

CE	BW	WW	YW	Milk	API	TI
7.4	2.1	57.9	82.9	20.9	123.4	69.8

Due 2/3/18 to TJ High Calibre

Lady Q is as big butted and square made as any heifer in the offering. Very powerful, big footed female that puts it all together. AI bred to High Calibre.

Steinbronn Farms



Lot 49

50

STN Stein's Lady 970B

2/26/16 • PB Simmental • #3334616

WS Pilgrim H182U

WS Pilgrim H182U

STN/Stein's Montana Gold

BIZ Pridette 970B

GF/HS Dream of Mine

Werning Prima Donna

CE	BW	WW	YW	Milk	API	TI
9.9	1.4	56.0	70.3	21.3	126.1	67.8

Due 3/16/18 to Colburn Primo

We purchased this heifer's dam in the 2014 Hartman customer appreciation sale to make our program better. By the looks of things it is working. This is her first natural calf and I like what I see. Very elegant and feminine. Bred to the very popular Primo.

Steinbronn Farms



Lot 50

Simmental Bred Heifers



Lot 51



TJSC Vindication



Lot 52

51 *STN Stein's Lady 754B*

2/16/16 • PB Simmental • #3334623

52 *STN Stein's Lady A835D*

2/11/16 • 1/2 Simmental • #3334615

Flying B Cut Above
TJSC Vindication 152A
 TJSC So Sweet 9W

WS Pilgrim H182U
BIZ Pridette 754B
 Werning Prima Donna

Rem. Lock n Load
W/C Lock Down 206Z
 GCF Miss New Level

Felt Next Big Thing
HL Ms NBT A835
 HTP Bluebird 4141

CE	BW	WW	YW	Milk	API	TI
6.8	3.0	58.9	84.7	17.6	114.0	65.4

Due 2/3/18 to TJ High Calibre

CE	BW	WW	YW	Milk	API	TI
14.9	-0.3	59.6	93.1	9.5	132.3	71.3

Due 3/16/18 to SFI Enough Said (ASA: 3139289)

This heifer is beautiful, smooth made, correct, and hairy to boot. She is out of one of our top donor cows, 754B, her mother has raised some great ones in her short career, including bulls and heifers! Our daughter showed a maternal sister to this heifer this summer and brought home many banners! The only difference with this heifer is she is sired by the very popular and widely used Vindication. She is bred up right to the great out-cross bull High Calibre, and she is destined to bring you many great ones to add to your herd.

Steinbronn Farms

Take a look at this girl's markings. We call her the bearded one. She will always be easy to pick out in the front pasture. She is a Loaded Up daughter that is very powerful and fun to look at. Bred up to the new Hartman Cattle owned Cowboy Cut son, Enough Said, that was a head turner in Denver.

Steinbronn Farms

53 *A/C Beauty*
 3/9/16 • 3/4 Simmental • #3324345

Flying B Cut Above WAGR Driver 706T
TJSC Vindication 152A A062
 TJSC So Sweet 9W 062

CE	BW	WW	YW	Milk	API	TI
5.3	3.0	55.3	82.5	15.4	97.8	61.0

AI 4/21 to CAJS Blaze of Glory. PE due 2/19/18
 PE 5/7 till 8/1 Living the Dream (ASA #: 3230473)

A stylish and powerful Vindication daughter who goes back to a really well balanced Driver cow. Beauty is just that, striking on the profile, powerful footed, and yet still moves with ease and grace. This one is sure to impress on sale weekend.

Darren Arthur Cattle Co.



Lot 53

54 *EBA Dez D11*
 2/14/16 • 1/2 Simmental • #3334601

Flying B Cut Above EXAR Titlelist T011
TJSC Vindication 152A SLL Miss Erin 1006
 TJSC So Sweet 9W SLL Miss Erin 9013

CE	BW	WW	YW	Milk	API	TI
9.3	2.3	52.5	84.3	20.4	100.4	59.5

AI 4/21 to Uno Mas Sexed. PE due 3/5/18
 PE 5/7 till 8/1 Living the Dream (ASA #: 3230473)

A moderate framed powerful Vindication daughter with added look and show ring hair. You'll love the meat and muscle this young lady brings along with her rocket front end.

E&B Arthur Land & Cattle



Lot 54

55 *EBA D712*
 2/8/16 • 1/2 Simmental • #Pending

LLSF Uprising Z925 Sitz Upward
WMCC Risen B411 Ms Upward 712
 PZC Got My Wishes Reg. Angus

CE	BW	WW	YW	Milk	API	TI
-	-	-	-	-	-	-

AI 4/21 to Blaze of Glory. PE due 2/24/18
 PE 5/7 till 8/1 Living the Dream (ASA #: 3230473)

A Risen daughter who is cowy made and soft in her design with standout substance and style. This female goes back to at Sitz Upward daughter to sweeten the pot.

E&B Arthur Land & Cattle



Lot 55

Simmental Bred Heifers

56

SPCC 48D

3/19/16 • 1/2 Simmental • #3333573

STF Royal Affair Z44 WK Signal 9350
JF Back In Black 406B **WK Forever Lady 2171**
 Zeis PCGF Perfection Baldrige Forever S240

CE	BW	WW	YW	Milk	API	TI
10.7	0.4	50.2	83.2	23.2	109.8	60.9

Due 2/1/18 to CAJS Blaze of Glory

These Back In Black females are the type to build a program around. Added volume, style, mass, and capacity is prominent with this sire group. This female goes back to a cow we acquired from Krebs Ranch for added predictability and performance.

Plendl Cattle Co.



Lot 56

57

SPCC Back to Back 708D

3/22/16 • PB Simmental • #3333567

STF Royal Affair Z44 Mr HOC Broker
JF Back In Black 406B **PF3 Broker**
 Zeis PCGF Perfection Plendl's Pathfinder

CE	BW	WW	YW	Milk	API	TI
4.0	2.7	55.6	83.2	16.7	98.3	60.2

Due 2/11/18 to CAJS Blaze of Glory

A bold ribbed, stoutly constructed Back In Black who goes back to a young Broker standout in our program. I love her tight uniform udder design and added extension to her front one third. She sells bred up early to Blaze of Glory.

Plendl Cattle Co.



Lot 57

58

SPCC 3D

3/23/16 • 1/2 Simmental • #3333572

STF Royal Affair Z44 Pine Ridge Hammer S32
JF Back In Black 406B **WK Shelly 2139**
 Zeis PCGF Perfection WK Shelly 6019

CE	BW	WW	YW	Milk	API	TI
9.5	0.8	57.4	92.9	21.1	117.8	67.5

Due 3/15/18 to CAJS Blaze of Glory

Another big bodied Back in Black who goes back to a high performing Krebs Ranch bred cow. If you like them wide bodied, structurally correct, and eye-appealing put a few marks beside 3D.

Plendl Cattle Co.



Lot 58

59 *SPCC Hard Girl 854D*

3/10/16 • 3/8 Simmental • #3333564

WS Pilgrim H182U WK Signal 9350

Dozer WK Jewel 2630

WW3 Countess 169Y WK Jewel 6079

CE	BW	WW	YW	Milk	API	TI
12.2	0.8	54.9	85.9	21.9	116.8	64.7

Due 2/20/18 to CAJS Blaze of Glory

These Dozer daughters simply draw your eye when you walk in the pen. They all have that wow factor and are developing into tremendous young cows. 854D is a deep sided, level made female, who has that flat muscle design which will lend her well in production.

Plendl Cattle Co.

60 *SPCC Black Jade 905D*

3/20/16 • 5/8 Simmental • #3333562

WS Pilgrim H182U Meyer Ranch 734

Dozer MPJ Miss Meyer 809

WW3 Countess 169Y MPJ Miss 219

CE	BW	WW	YW	Milk	API	TI
3.5	2.4	51.9	72.0	17.5	97.5	55.8

Due 2/11/18 to CAJS Blaze of Glory

Dozer is a sire we are gaining a lot of confidence in and for good reason. He comes with consistency, power, and added eye-appeal. This young standout is out of a truly impressive Meyer daughter we picked up from Mark & Pam Johnson of Iowa. A great heifer with a rich history backing her.

Plendl Cattle Co.

61 *SPCC Hard Time 890D*

3/15/16 • 3/8 Simmental • #3333563

WS Pilgrim H182U HARB Rick O'Shay 838

Dozer WK Miss Montana 2406

WW3 Countess 169Y WK Miss Montana 0423

CE	BW	WW	YW	Milk	API	TI
12.5	0.7	55.9	90.3	22.4	115.5	65.9

Due 1/14/18 to CAJS Blaze of Glory

Another Dozer daughter who goes back to a high performing Krebs Ranch female. Study the udder design, foot size, and structural design of this female. She is sure to stand in the front pasture for years to come.

Plendl Cattle Co.



Lot 59



Lot 60



Lot 61

SimAngus Standouts



Lot 62



FBFS Bonafide



JSC/RSF Maxi Belle 1U



Lot 63

62

4B Miss Blue Chip 156D

2/11/16 • 1/2 Simmental • #Pending

Dameron First Class
EXAR Blue Chip 1877B
Greens Princess 1012

LBS The Foreman
4B Miss Foreman 98X
4B Miss MrMt 27PR

CE	BW	WW	YW	Milk	API	TI
-	-	-	-	-	-	-

AI 7/20 to FBFS Bonafide. Safe AI.

This Blue Chip daughter is sure to find friends sale weekend, just like she has in our replacement pen all summer long. Body, mass, width, dimension, and eye-appeal from her head to her tail. It's hard to sell this type but it is a pretty quick decision to buy this kind when the opportunity is presented. 156D sells bred up to FBFS Bonafide to sweeten an already impressive deal.

4B Land & Cattle

63

SPCC Max Style 744D

3/25/16 • 1/2 Simmental • #3333566

Gambles Hot Rod
Silveiras Style 9303
Silveiras Elba 2520

DJ Salute G509
JSC/RSF Maxi Belle 1U
JAH Miss Maxi Belle

CE	BW	WW	YW	Milk	API	TI
9.9	1.8	49.5	76.8	19.8	116.4	62.7

Due 2/11/18 to CAJS Blaze of Glory

It's no secret that Style is all the rage and impressive daughters like this one are the reason why. 744D is a direct daughter of our Maxi Belle donor who raised quite a few of our top selling PB Simmental open heifers earlier this fall. If you like your replacement females with a killer look, added body, mass, and volume be sure you are on hand to tie into this impressive breeding piece.

Plendl Cattle Co.

64 *4B Miss 184X 220D*

2/24/16 • 1/2 Simmental • #Pending

SVF Steel Force S701 4B Lut 95W
4B 184X **4B Miss Lut 224Y**
 4B Miss 969 97S Y1 Sweet November

CE	BW	WW	YW	Milk	API	TI
-	-	-	-	-	-	-

AI 4/26 to TLLC One Eyed Jack. Safe AI.

184X is one of our top clean up sires, but he isn't just any old clean up bull. A purebred daughter of his earned Reserve Champion Honors at the West Virginia State Fair in 2015. This well balanced female is bold in her rib shape, razor fronted, and stands on a well designed foot. She sells bred up early to One Eyed Jack.

4B Land & Cattle

65 *4B Miss Reload 323D*

3/19/16 • 3/4 Simmental • #Pending

CNS Dream On L186 GF Maximus N391
WF ReLoad A165 **4B Miss Max 52Y**
 SS Sweet Pea 4B Miss Dream 15S

CE	BW	WW	YW	Milk	API	TI
-	-	-	-	-	-	-

AI 5/18 to FBFS Bonafide. Safe AI.

Females like this will make you happy to be in the cattle business, and glad to walk into the pasture every morning. Deep sided, soft made, and feminine not to mention she is backed by Maximus for added predictability in production.

4B Land & Cattle

66 *4B Miss Reload 239D*

3/1/16 • 3/4 Simmental • #Pending

CNS Dream On L186 Flying B Cut Above
WF ReLoad A165 **4B Miss Cut Above 102Y**
 SS Sweet Pea 4B 126T

CE	BW	WW	YW	Milk	API	TI
-	-	-	-	-	-	-

AI 4/20 to FBFS Bonafide. Safe AI.

A wide bodied, sleek fronted daughter of Reload who goes back to an impressive Fat Butt daughter. Study the soft structurally correct design of this standout. Then take a moment to imagine just how outstanding her purebred calf by Bonafide could be.

4B Land & Cattle



Lot 64



Lot 65



Lot 66

67 *SPCC Diamond Class 832D*

3/20/16 • 1/2 Simmental • #3333565

EXG RS First Rate S90 DJ Salute G509
Dameron First Class JSC/RSF Maxi Belle 1U
 Dameron Northern Ms JAH Miss Maxi Belle

CE	BW	WW	YW	Milk	API	TI
4.4	2.1	59.7	83.3	22.9	92.8	61.8

Due 2/12/18 to CAJS Blaze of Glory

This is a razor necked, stylish First Class daughter out of our DJ Salute donor, Maxi Belle. With her out cross Simmental pedigree and soft design she will be a lot of fun to breed up to purebred status. Great proven genetics!

Plendl Cattle Co.



Lot 67

68 *4B Miss Pays to Dream 120D*

1/28/16 • 3/4 Simmental • #Pending

CNS Dream On L186 Trendsetter
Pays To Dream 4B Miss Trendsetter 112Z
 MLF BL Jessie K336 4B Miss Maximus

CE	BW	WW	YW	Milk	API	TI
-	-	-	-	-	-	-

AI 7/15 to FBFS Bonafide. Safe AI.

Soft made, big middled, and good looking. This Pays to Dream daughter goes back to a Trendsetter daughter who has stood the test of time around here.

4B Land & Cattle



Lot 68

69 *SPCC Cover Girl 727D*

2/5/16 • 3/4 Simmental • #3333573

TLLC One Eyed Jack Sandeen's SOS
STCC Jack Around 4031 PF3 SOS
 HF Serena Plendl's Miss 2256S

CE	BW	WW	YW	Milk	API	TI
4.0	2.5	44.3	57.5	17.6	80.9	51.4

Due 3/15/18 to CAJS Blaze of Glory

727D is a beautiful, wedgy made, big hipped heifer that has all the class and style that you can pack in a female. Study her structural design sale weekend as well as her stunning udder design.

Plendl Cattle Co.



Lot 69

70 **4B Miss Combustible 22D**

1/5/16 • 3/4 Simmental • #Pending

SVF Steel Force S701 Duff Outer Limits
FBF1 Combustible **4B Miss Outer Limit 19Z**
 Lazy H Burn Baby R 4B Miss Pathfinder

CE	BW	WW	YW	Milk	API	TI
-	-	-	-	-	-	-

AI 6/20 to FBFS Bonafide. Safe AI.

A big bodied Combustible female with a strong maternal pedigree. The Pathfinder daughters and granddaughters have laid the foundation of my program due to their added foot size, structural prowess, and high performance design. This one sells safe to the over \$100K valued Bonafide!

4B Land & Cattle



Lot 70

71 **SPCC Revival 756D**

3/25/16 • 1/2 Simmental • #Pending

LLSF Uprising Z925 Cross Fire
WS Revival **Plendl Cross Fire**
 SS Noreen Angus

CE	BW	WW	YW	Milk	API	TI
-	-	-	-	-	-	-

Due 3/1/18 to CAJS Blaze of Glory

This Revival daughter is a sharp fronted baldy with added rib shape. She is a female you are sure to appreciate for her structural design and added balance.

Plendl Cattle Co.



Lot 71

72 **SPCC Locks of Love 705D**

3/22/16 • 1/2 Simmental • #3333569

Rem. Lock n Load Yardley High Regard
W/C Lock Down 206Z **Lazy H Bar Forever Lady 75A**
 GCF Miss New Level Lazy H Bar Lady 5001

CE	BW	WW	YW	Milk	API	TI
12.5	-0.7	62.2	95.9	12.7	119.0	70.0

Due 2/12/18 to CAJS Blaze of Glory

The Lock Down females are developing into some beautiful productive cows. Our daughters in production have milked well and held their flesh. 705D is a sharp fronted female who traces back to our powerhouse 5001 donor who adds predictability and capacity to all of her descendants.

Plendl Cattle Co.



Lot 72

Risen Daughters...



Lot 73



FHEN Halftime



Lot 74

73

EBA Denali D05

3/2/16 • 1/2 Simmental • #3334599

LLSF Uprising Z925
WMCC Risen B411
 PZC Got My Wishes

GAR Predestined
VAN Predestined 0106
 HPCA Retail Product

CE	BW	WW	YW	Milk	API	TI
6.5	1.3	67.3	109.6	24.3	124.7	78.9

AI 4/22 to FHEN Halftime. PE due 4/6/18
 PE 5/7 till 8/1 Living the Dream (ASA #: 3230473)

A striking baldy with loads of capacity and performance. These Risen daughters excel in terms of growth, length of body, and added frame size. I love the front one third that this female possesses as well as her abundance of rib shape and dimension to her rear quarter.

E&B Arthur Land & Cattle

74

EBA Discover D093

2/12/16 • 1/2 Simmental • #3334600

LLSF Uprising Z925
WMCC Risen B411
 PZC Got My Wishes

Mytty In Focus
Pine View Rita W093
 SVF Rita 53N

CE	BW	WW	YW	Milk	API	TI
10.4	0.4	65.9	105.9	23.8	123.6	76.0

AI 4/21 to FHEN Halftime. PE due 3/11/18
 PE 5/7 till 8/1 Living the Dream (ASA #: 3230473)

Another high performing baldy daughter of Risen who goes back to an impressive Mytty In Focus daughter. I love the structure and refinement of this female and truly feel that she will develop into a valuable addition to any program for years to come.

E&B Arthur Land & Cattle

75

EBA Dalcy D017

2/27/16 • 1/2 Simmental • #3326628

SP The Answer 813 SAS Midnight Special
CARD Answer 76Y **SAS Special U252**
 CARD Pride 76W SAS Rozey

CE	BW	WW	YW	Milk	API	TI
12.6	0.0	61.2	88.6	25.9	111.5	65.8

AI 4/21 to Mr CCF 20/20. Safe AI
 PE 5/7 till 8/1 Living the Dream (ASA #: 3230473)

This moderate framed Answer female is the type we love to keep for cows. Wide based at the ground, great angles to her joints, and a soft make up. This baldy female is sure to find her share of admirers sale weekend. Sells safe AI to 20/20.

E&B Arthur Land & Cattle

76

EBA DeeDee D001

3/24/16 • 1/2 Simmental • #3326629

Dameron PVF Raptor RIV Black Choctaw
LLL/WMCC Big Softy **BR Miss Choctaw 380N**
 FBF Seducing Erica BR Miss BL JIM 115L

CE	BW	WW	YW	Milk	API	TI
15.5	-0.6	51.6	81.6	22.9	106.0	58.7

AI 4/21 to CAJS Blaze of Glory. Due 2/19/18
 PE 5/7 till 8/1 Living the Dream (ASA #: 3230473)

A high calving ease female who is striking on the profile. This Big Softy daughter is well balanced, sound made, and extended fronted.

E&B Arthur Land & Cattle

77

EBA Faith of Steel D514

1/19/16 • 1/2 Simmental • #3238695

CNS Dream On L186 Mill Coulee Supreme
SVF Steel Force S701 **Mill Coulee Barb 433**
 SVF Sheza Beauty 901 Mill Coulee Barb 719

CE	BW	WW	YW	Milk	API	TI
10.9	0.7	51.8	84.1	10.1	101.5	60.5

AI 4/10 to W/C Lock Down. PE due 3/26/18
 PE 5/7 till 8/1 Living the Dream (ASA #: 3230473)

D514's dam was a standout donor for Kruse Angus Farms, having produced the 2008 Junior National Angus Show Champion Female. This Steel Force daughter is deep sided, powerful hipped, and correct when set in motion.

E&B Arthur Land & Cattle



Lot 75



Lot 76

78

SPCC Lighting 886D

2/26/16 • 5/8 Simmental • #3333571

WS Pilgrim H182U Meyer Ranch 734
Dozer **Lazy H Bar Forever Lady 12X**
 WW3 Countess 169Y Lazy H Bar Lady 5001

CE	BW	WW	YW	Milk	API	TI
3.8	2.5	56.5	78.3	19.9	102.0	59.7

Due 2/19/18 to CAJS Blaze of Glory

This one didn't get pictured but don't let that slow you down as power is in the blood here! 886D is a Dozer daughter who is out of an impressive Meyer on our 5001 donor. She sells bred up early to Blaze of Glory.

Plendl Cattle Co.

Reg. Angus Bred Females



Lot 79



Lot 80

79

Dameron Lucy 591

3/25/15 • Reg. Angus • #18589430

80

EBA Rita D093

1/26/16 • Reg. Angus • #Pending

PR Black Friday 0244 SS Objective T510
Penners-CC Double Black **EF Lucy 0026**
 PR 629 205-554 Basin Lucy 293S

Rito 9FB3 of Fullback PA Power Tool 9108
Dameron PVF Raptor 702 **EBA Rita B093**
 Davis Proven Queen Pine View Rita W093

CED	BW	WW	YW	Milk	\$W	\$B
1	4.0	63	98	24	55.84	92.38

CED	BW	WW	YW	Milk	\$W	\$B
-	-	-	-	-	-	-

AI 4/19 to SAV Brilliance.

AI 4/21 to CARD Answer 76Y. Safe AI

PE 5/26 till 7/20 to 7HL Confidence (AAA: 18155449)

PE 5/7 till 8/1 Living the Dream (ASA #: 3230473)

This Double Black daughter is one cool made Angus. Big powerful hip design, added body capacity, and a freak front end. This one will mate up well, Angus as well as Simmental. 591 was likely bred first cycle to the clean up sire.

It's no secret that these Raptor daughters make excellent cattle regardless of if you mate them up Angus or Simmental. This stunning young lady is cool fronted, long spinned, big ribbed, and has a nice udder design. She sells safe AI to CARD Answer.

Rutledge Farms

E&B Arthur Land & Cattle



DELARO™

You keep raising the bar.

The challenge of higher yields keeps pushing you. New Delaro™ fungicide can help you get the edge you're looking for.

- Broader spectrum of disease control
- Best-in-class, dual-mode-of-action residual
- Improved plant health

Your top-performing hybrids and varieties will have the protection they need to help you achieve your personal best.

Gunslinger Daughters



Lot 81



WLE Uno Mas



Lot 82

81

EBA Diane D16

4/20/16 • 1/2 Simmental • #3334602

SS/PRS Gunslinger 824X SS Objective T510
HPF Gunslinger A310 **SVF Forever Lady T266**
 HPF Misti U353 VAR Forever Trendy

CE	BW	WW	YW	Milk	API	TI
14.2	-1.3	51.3	79.0	20.2	135.2	69.2

AI 4/21 to Uno Mas Sexed. Too close to call
 PE 5/7 till 8/1 Living the Dream (ASA #: 3230473)

High numbered and high on quality! This baldy standout by Gunslinger is the keeping kind, she displays a clean front end, flat shoulder design, ample rib capacity, and a great hip. Her combination of genetic and phenotypic quality will add to her value and productivity over the long haul.

E&B Arthur Land & Cattle

82

EBA Red Star D423

3/17/16 • PB Simmental • #3326623

SS/PRS Gunslinger 824X SAS/ASF All Star
HPF Gunslinger A310 **SAS All Star U422**
 HPF Misti U353 SAS PBeef R420

CE	BW	WW	YW	Milk	API	TI
7.9	2.8	60.7	82.1	18.2	116.3	65.3

AI 4/21 to Uno Mas Sexed. PE due 5/10/18
 PE 5/7 till 8/1 Living the Dream (ASA #: 3230473)

It is pretty hard to beat a Cherry Red Simmental in the pasture, especially when she is this good. Gunslinger has done a great job in our program adding eye-appeal and structural correctness to all of his progeny.

E&B Arthur Land & Cattle

83

STN Stein's Lady B401

4/19/16 • 1/2 Simmental • #3334618

Mr NLC Upgrade

Unregistered Sire

Mr TR Hammer 308A ET

B401

SVF/HS Expecting A Dream

Unregistered Dam

CE	BW	WW	YW	Milk	API	TI
5.5	2.8	78.5	116.8	19.0	110.8	72.8

Due 2/3/18 to TJ High Calibre

Here is a Hammer daughter that has been a favorite since day one. If you want a gorgeous half blood female, here she is. Bred to the Herbst/Hartman High Calibre bull. High Calibre brings a out-crossed pedigree that is sure to work.

Steinbronn Farms



Lot 83





Calmar • Fort Atkinson • Osian • Waucoma • West Union

Justin Steffens Cell: 563-380-6761
402 S. Vine St.
West Union IA 52175



Jeff Leerar Manly, IA
Pioneer Sales Rep. Cell: 641-430-0651
jeffrey.leerar@plantpioneer.com

Drs. McMillan, Bowden, Johnson, Schulte, and Geater



Embryo collection, freezing, and transfer, synchronization programs, AI, and ultrasounding services



GET THE PICTURE?!

Find your local dealer at:



WWW.SHOWRITE.COM

Part of the **Tecolr** Feed Division

Show Team Specialists

- Man Palacio | 936.215.4478
- Miles Toenyes | 618.420.9413
- Cooper Newcomb | 580.821.2361
- Dennis Wilber | 209.482.6858
- Ryan Sites | 580.695.0429
- Josh Dikline | 214.882.1640
- Todd Kennedy | 405.550.6769
- Jason Lackey | 806.787.3606





Terms of Sale:

Terms of payment are cash, good check, or Visa/Master Card. All credit card payments will incur a 3% processing fee which will be applied to your total purchase price. Thus a \$1000 purchase will be charged \$1030. No cattle will be loaded until approved by sale clerks.

Terms & Conditions:

All cattle sell under the terms and conditions of their respective breed associations. All announcements made on the supplement sheet or on the sale block will take precedence over material presented in this book. EPD's are based off fall of 2017. Please leave all transfer instructions with the sale clerks following the auction.

Trucking:

We will work with you to find the most reasonable and economical trucking available. Cattle must leave the sale site by Sunday so please let us know as soon as possible following the sale what your needs may be.

Trucking available through Courtney Lovett: 402-984-3133.

Heard Health:

All cattle will have papers for interstate travel, and all bred females will be recently pregnancy checked. Buyers of bred cattle have 21 days to re-pregnancy check purchases. If any animals are found to be open please contact the seller or sale management within that 21 day period for an adjustment to be made.

Absentee Bidding:

If you will not be able to attend the sale please contact Sale Management for a member of the sale staff to obtain a bidder number in order to bid over the phone.

Liabilities:

Everyone attending this auction does so at their own risk. Sale Management, Staff, Consignors, & the Hansen Center assumes no risk for any injury or loss which occurs at the sale site.

Sexed Semen:

We cannot 100% guarantee sex on cattle bred with sexed semen.

Insurance:

Insurance will be available at the clerk's desk. James F. Bessler Inc. Mortality Insurance. Jim Bessler 815-762-2641.

LiveAuctions.TV

Real Time Online Bidding available through www.liveauctions.tv. Please login and register for a bidder number at least 1 hour prior to sale start time. If internet issues arise during the sale please contact Nick Dwyer 309-337-6404 for bidding assistance.

Dwyer Cattle
740 26th Street
Roseville IL 61473



Royal Classic



January 6, 2018 at 5:00 pm
Hansen Learning Center
Ames, IA

Lifestyle, Livelihood, Legacy